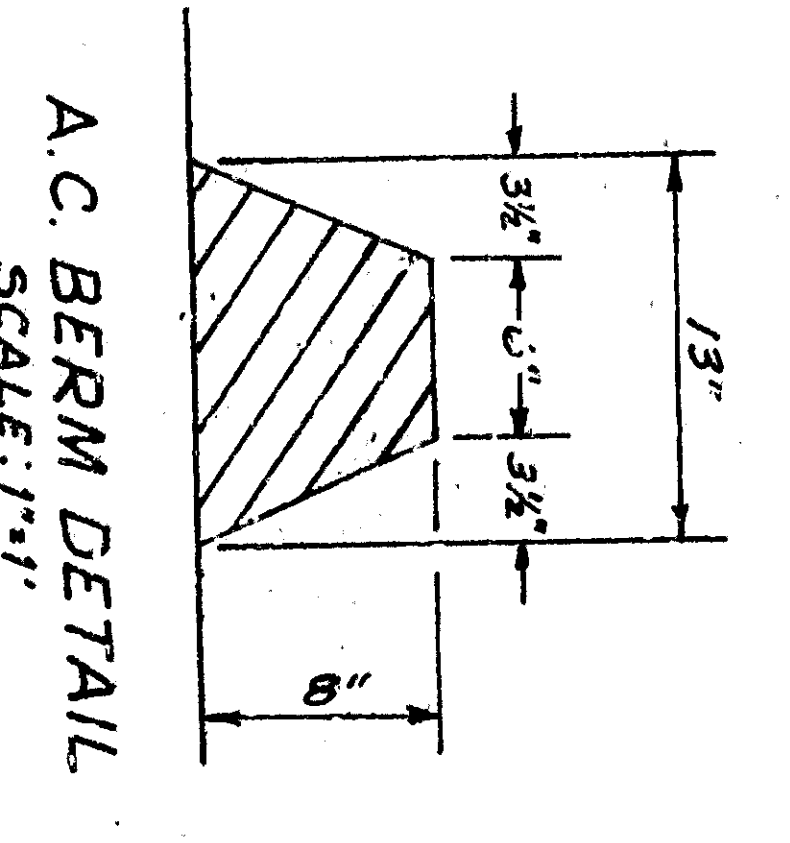
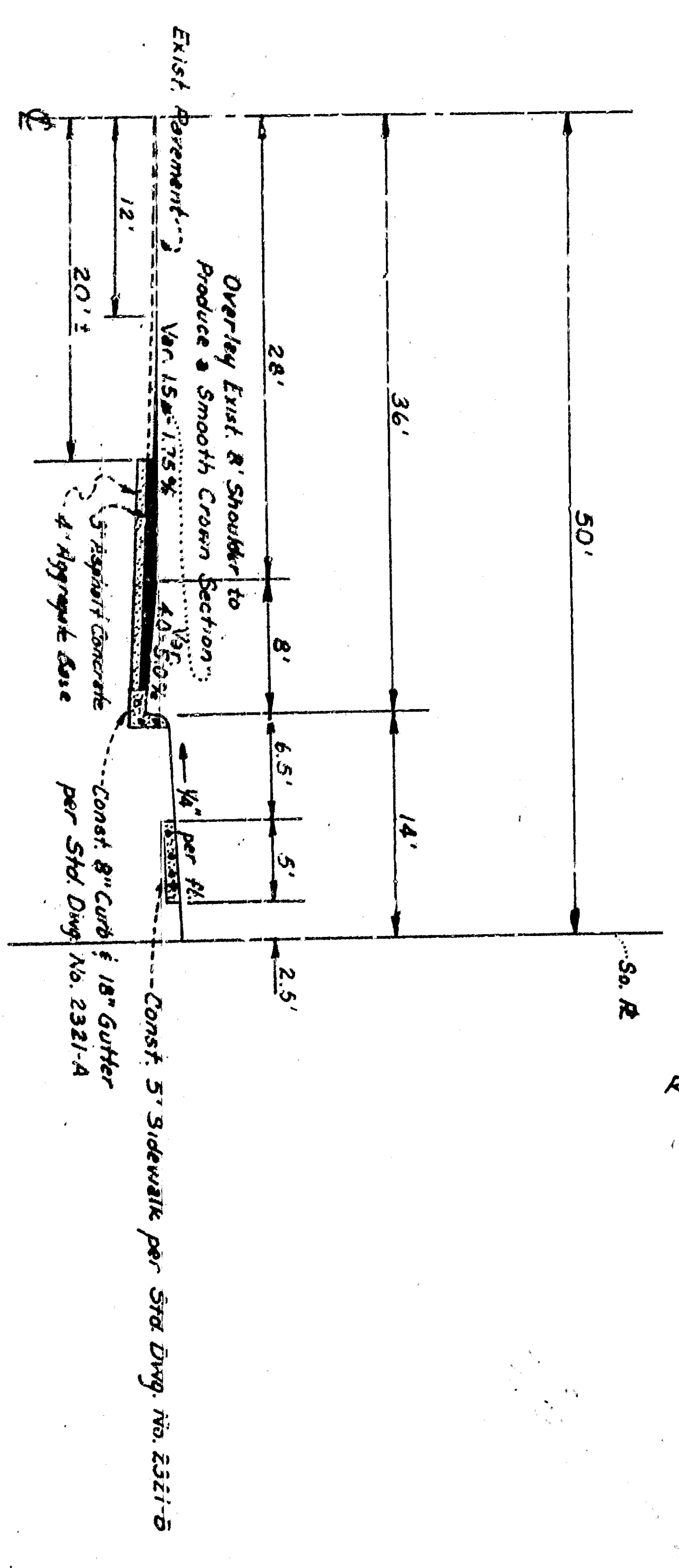


**TYPICAL SECTION
MILL STREET**
SCALE: 1"=10'

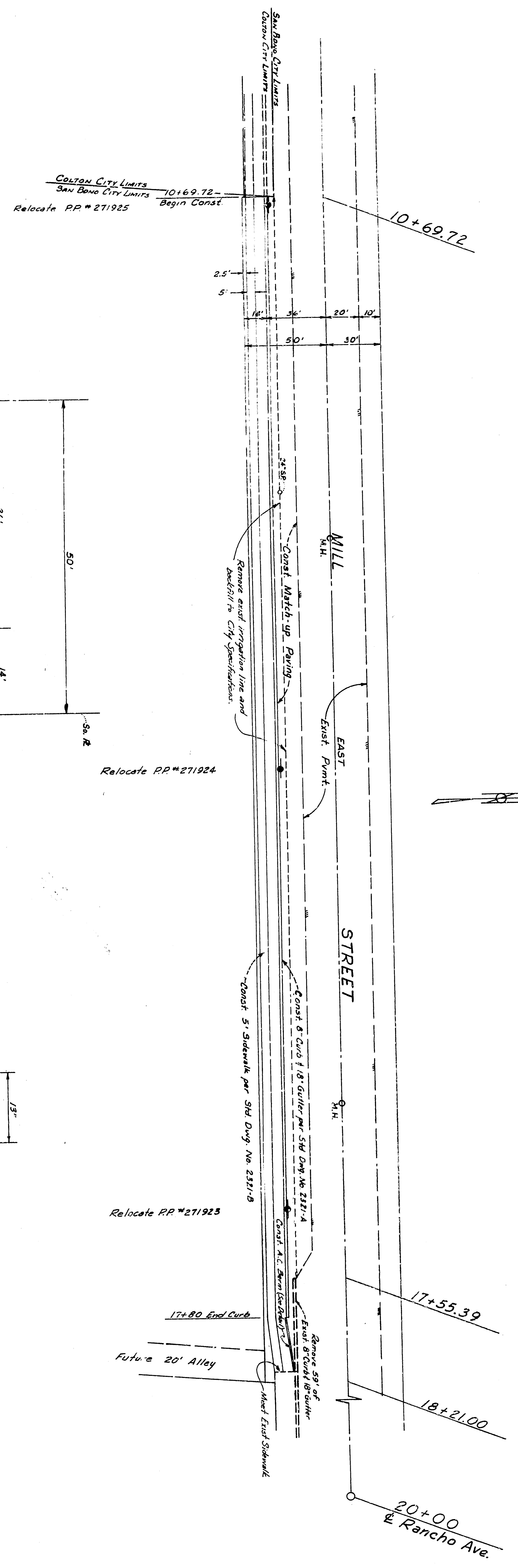
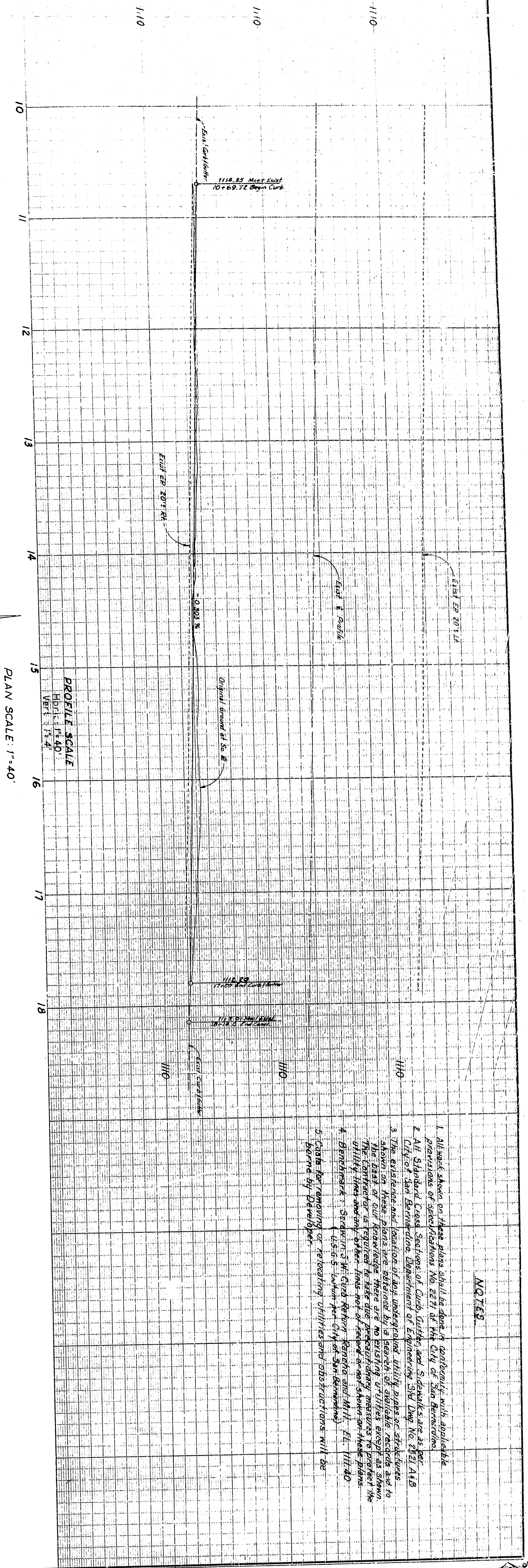


- NOTES**
1. All work shown on these plans shall be done in accordance with applicable provisions of specifications No. 2271 of the City of San Bernardino.
 2. All Standard Cross Sections of City Guides and Standards are as per City of San Bernardino Department of Engineering STD Dwg No. 2721 A & B.
 3. The existence and location of any underground utility pipes or structures shown on these plans are obtained by a search of available records and to the best of our knowledge there are no existing utilities existing beneath the project area. The contractor is required to locate and mark all utilities prior to the utility lines shown on these plans.
 4. Benchmark: Station 3 W. curb, Rancho Rancho and Mill, E.L. 1111.40
 5. Check for removing or relocating utilities and obstructions will be borne by Developer.

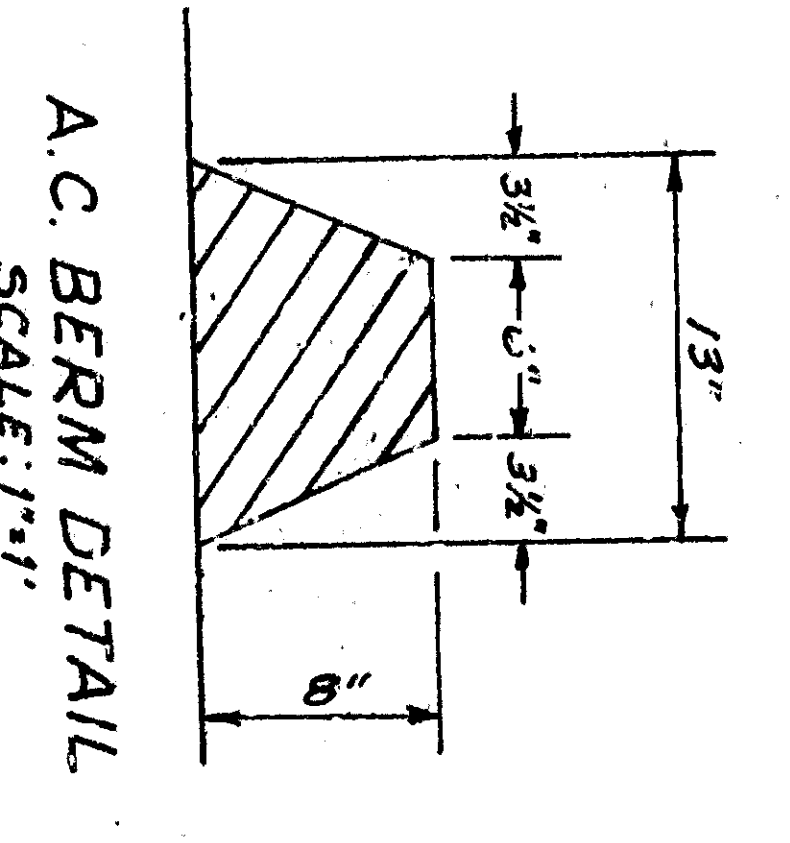
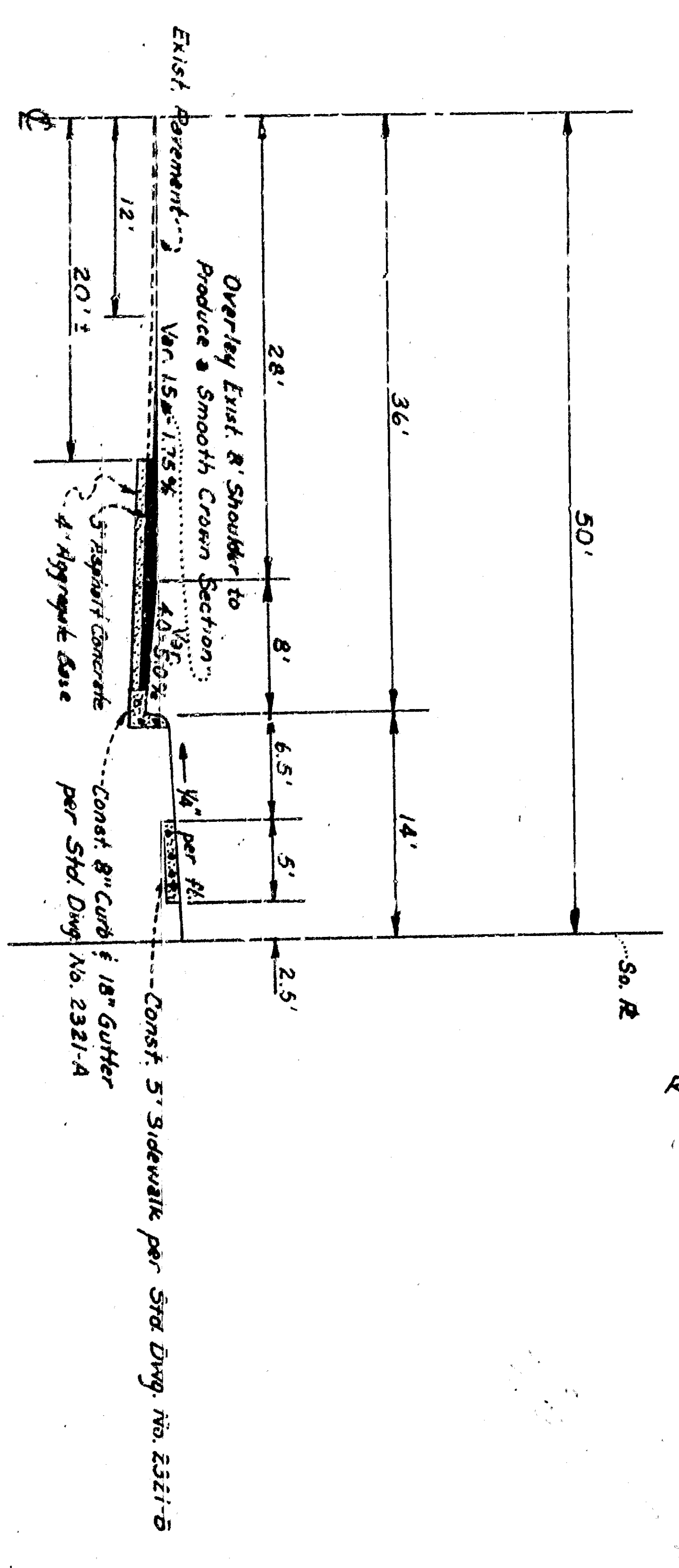
MILL STREET
IMPROVEMENT PLAN & PROFILE
Riddell & Strachm
August 28, 64
DCH 3164
JLR 1

John F. Riddell
RE 13146 23244

19653 DWG



**TYPICAL SECTION
MILL STREET**
SCALE: 1"=10'



- NOTES**
1. All work shown on these plans shall be done in accordance with applicable provisions of specifications No. 2271 of the City of San Bernardino.
 2. All Standard Cross Sections of City Guides and Standards are as per City of San Bernardino Department of Engineering STD Dwg No. 2721 A & B.
 3. The existence and location of any underground utility pipes or structures shown on these plans are obtained by a search of available records and to the best of our knowledge there are no existing utilities existing beneath the project area. The contractor is required to locate and mark all existing utilities. Utility lines shown on these plans are not to be assumed to be in-place.
 4. Benchmark: Station 3 W. Curb Return Rancho and Mill, E.L. 1111.40 (U.S.C. datum per City of San Bernardino).
 5. Check for removing or relocating utilities and obstructions will be borne by Developer.

MILL STREET
IMPROVEMENT PLAN & PROFILE
Riddell & Strachm
August 28, 64
DCH 3164
JLR 1

John T. Riddell
RE 13146 23244

19653 DWG